



Simple Type Tool Setting Stand

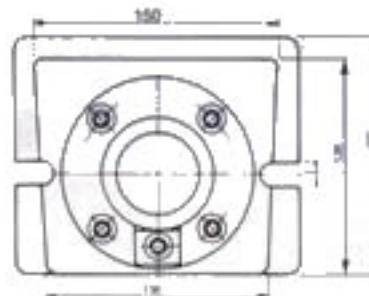
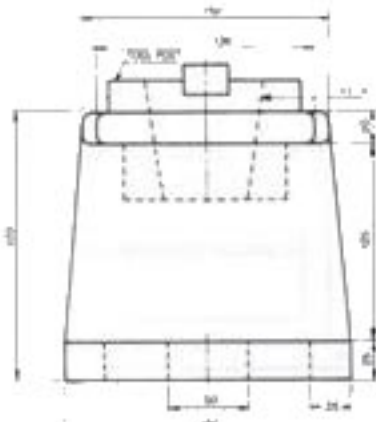


- This tool setting stand is one kind of subsidize tool for helping machine center to work efficiently.

To be used fixing the tools on tool holder. It could avoid the method of using draw bar to fix (on machine center). It is safe, and doesn't effect the precision of machine's spindle.

- It is simple structive type.

And could fix tooling on the above and hold the pull studs on the below of it. This is the excellent helping tools for simple, rapid and safe.



| ORDER NO. | SHANK TAPERS | STD | WEIGHT | CODE NO. |
|-----------|--------------|---------------|--------|----------|
| VTS-BT-30 | 30 | BT | 13kg | 3405-010 |
| VTS-BT-40 | 40 | ISO | 13kg | 3405-011 |
| VTS-BT-50 | 50 | NT | 12kg | 3405-012 |
| VTS-SK-30 | 30 | DIN 69871A | 13kg | 3405-013 |
| VTS-SK-40 | 40 | | 13kg | 3405-014 |
| VTS-SK-50 | 50 | | 12kg | 3405-015 |

